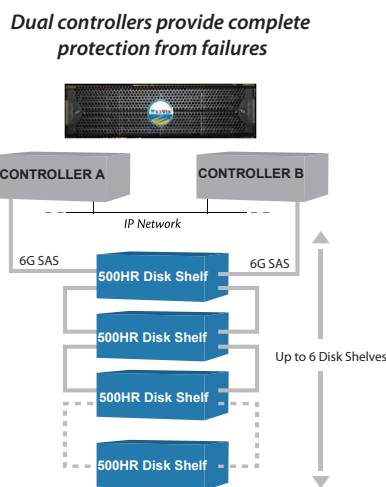


Highly Redundant Unified Storage for your Mission Critical Data.

The IceWEB Storage System 6000-HR is a highly redundant, dual controller configuration that offers the high availability required for mission critical environments. The 6000-HR configurations scale to 224TBs with affordable disk shelves, saving you the expense of adding controllers to just add capacity. The 6000-HR supports ENT SAS and MDL SAS drives.

It's Simple.

The IceWEB 6000-HR simplifies management by providing an all-inclusive storage system that lets you store both block and file data - Microsoft Exchange, SQL Server and Oracle databases, virtualized environments, scanned images, files, video, pictures, graphics, and voice - on one enterprise-class platform. The plug-and-play IceWEB Storage System 6000-HR is very easy to install in your environment. Setup wizards allow you to provision storage in as little as 15-minutes and the intuitive interface simplifies the use of its sophisticated storage management capabilities. Features and price make the IceWEB Storage System 6000-HR a perfect fit for both data center and disaster recovery sites requiring high availability.



It's Powerful.

Use the IceWEB Storage System 6000-HR to manage third-party storage from other vendors. This powerful capability lets you reclaim stranded storage by unifying older or less functional disk beneath IceWEB, simplifying management.

It's Affordable.

We challenge you to find a more capable platform for the price. The IceWEB Storage System combines the right mix of functionality with the service and support you get from a nimble, customer-oriented company.

It's VMware Ready.

To make the most of your virtual server environment, virtualize your storage pool with the IceWEB Storage System 6000-HR. You can centralize storage and VM management tasks and take advantage of instantaneous snapshots to make your backup operations more efficient.

Simple. Advanced. Affordable. Learn more and see how the IceWEB Storage System 6000-HR can simplify your data storage while offering all the functionality you'd expect from an enterprise-class platform.

Contact us at 800-465-4637.

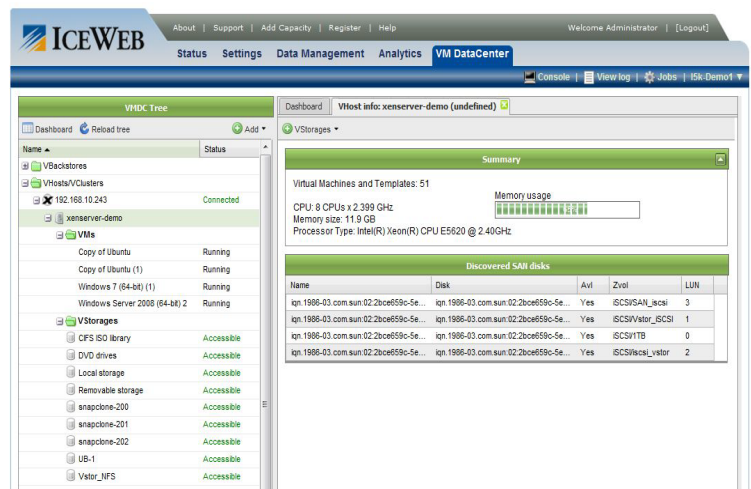


Expansion disk shelves provide for storage expansion up to 224TB per system

It's Advanced.

All IceWEB Storage System configurations offer complete data protection capabilities:

- Hot-pluggable drives and power supplies
- Built-in support for RAID-Z (RAID-5), RAID-Z2 (RAID-6), and RAID-Z3 (triple parity)
- Automatic error correction ensures data integrity
- Unlimited snapshots simplifies development and optimizes backup
- Thin provisioning greatly increases utilization
- Flexible replication (local or remote, real-time or scheduled)
- Capacity and utilization reporting



IceWEB Storage Systems can be managed over the Internet with your web browser. The easy-to-use interface allows you to start and stop VMs, create clones and templates, and much more.

	IceWEB Storage System 6000HR (each system unit)	SS-6000HR-12	SS-6000HR-24	SS-6000HR-7.2	SS-6000HR-18.3
Hardware	Standard Processor Configuration	Two Intel Xeon E5620 2.4 GHz Quad-Core			
	System Memory Per Processor (Maximum)	24GB DDR3-1066 ECC SDRAM (48GB DDR3-1066 EXX SDRAM)			
	Networking	6x Gigabit Ethernet (GbE)			
	Option	2 or 4x 10 Gigabit Ethernet Ports			
	Option	2 or 4 x 4GB Fibre Channel Ports			
	Option	2 or 4x 8GB Fibre Chanel Ports			
	Storage Controller	Two Redundant Hot-Swap Controllers			
Storage	Standard Capacity	12 TB	24 TB	7.2 TB	18.3 TB
	Maximum Capacity	224 TB			
	Standard Disk Capacity	12x 1TB 7.2K MDL SAS	12x 2TB 7.2K MDL SAS	12x 600GB 15K SAS	9x 2TB SAS & 3x 100GB SSD
	Form Factor	3U			
	Maximum Expansion Disk Shelves	6			
Software	File System	Zettabyte File System (ZFS) - 128-bit			
	File System Protocols	NFSv2, NFSv3, NFSv4, CIFS, FTP, HTTP, WebDAV, rsync, NDMP			
	Block Protocols (Optional)	iSCSI (Fibre Channel)			
	Storage Pools	Hybrid; Shared Pool supporting multiple classes of storage			
	RAID Levels	Striping, Mirroring, Single Parity RAID-Z, Dual Parity RAID-Z2 and Triple Parity RAID-Z3			
	Data Compression	Integrated			
	Data Deduplication	Integrated (block-level)			
	Data Integrity	Metadata and user data checksums			
	Snapshots	Instantaneous, High-Performance, Unlimited			
	Snapshot Rollback	Instantaneous			
	Thin Provisioning	Integrated			
	Storage Quotas	File system, Directory			
	Replication (Optional)	Asynchronous (Synchronous)			
	VM Integration	VMware, Microsoft HyperV, Citrix XenServer			
Network Services	System Management	Integrated; HTTP or HTTPS-based, Remotely Accessible and Manageable			
	Directory Services	Active Directory, NIS, LDAP			
Power	AC Input	Auto-switching, 100 - 240V Auto-Range, 50-60 Hz			
	Current	11.5 - 5.5A Max			
	Power Supply	2x Redundant Hot-Swap 1200W High-Efficiency			
	Power Supply Efficiency	80 PLUS Gold Certified (93%)			
Cooling	System Cooling Fans	12x PWM Fans - Redundant Hot-Swap			
Physical	Dimensions (D x W x H)	25.5" D x 17.2" W x 5.2" H / 648mm D x 437mm W x 132mm H			
	Weight	75 lbs / 34.02 kg (without disk drives)			
Environment	Temperature	Operating: 10C to 35C (50F to 95F)			
	Humidity	Operating: 20% to 95% (non-condensing)			
	Altitude	Operating: -16m to 3048m (-50ft to 10,000ft)			
	Shock	Maximum: One shock pulse in positive Z-axis of 41g for up to 2ms operating			
	Vibration	Maximum: 0.26 Grms at 5-350Hz operating			
Regulatory Approvals	Emissions	FCC Class A, EN 55022 Class A, EN 61000-3-2/-3-3, CISPR22 Class A			
	Safety	CSA/EN/IEC/UL 60950-1 Compliant, UL or CSA Listed (USA & Canada, CE Marking (Europe)			