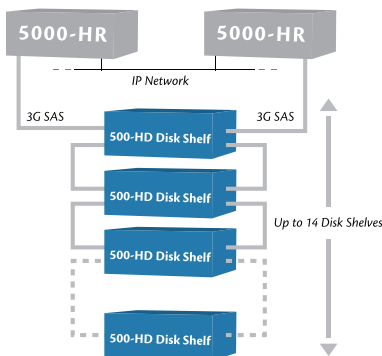


Highly redundant unified storage for your data center and remote site.

The IceWEB Storage System 5000-HR is a highly redundant, dual head configuration that offers the high availability required for mission critical environments. The 5000-HR configurations scale to 448 TBs with affordable disk shelves, saving you the expense of adding controllers just to add capacity. The 5000-HR supports ENT SAS and MDL SAS drives.



It's Simple.

The IceWEB 5000-HR simplifies the management of your environment by providing an all-inclusive storage system that lets you store both block and file data - Microsoft Exchange, SQL Server and Oracle databases, virtualized environments, scanned images, files, video, pictures, graphics, and voice - on one enterprise-class platform. The plug-and-play IceWEB Storage System 5000-HR is easy to install

in your environment. Setup wizards allow you to provision storage in as little as 15 minutes and the intuitive interface simplifies the use of its sophisticated storage management capabilities. Features and price make the IceWEB Storage System 5000-HR a perfect fit for both data center and disaster recovery sites that require high availability.

It's Advanced.

All IceWEB Storage System configurations offer complete data protection capabilities:

- Hot-pluggable drives and power supplies
- Built-in support for RAID-Z (RAID-5), RAID-Z2 (RAID-6), and RAID-Z3 (triple parity)
- Automatic error correction ensures data integrity
- Unlimited snapshots simplifies development and optimizes backup
- Thin provisioning greatly increases utilization
- Flexible replication (local or remote, real-time or scheduled)
- Capacity and utilization reporting

It's Powerful.

Use the IceWEB Storage System 5000-HR to manage third-party storage from other vendors. This powerful capability lets you reclaim stranded storage by unifying older or less functional disk beneath IceWEB, simplifying management.

It's Affordable.

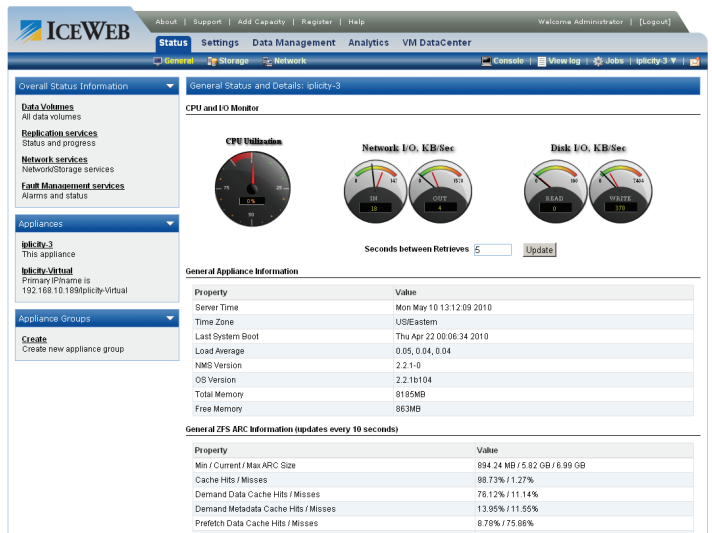
We challenge you to find a more capable platform for the price. The IceWEB Storage System combines the right mix of functionality with the service and support you get from a nimble, customer-oriented company.

It's VMware Ready.

To make the most of your virtual server environment, virtualize your storage pool with the IceWEB Storage System 5000-HR. You can centralize storage and VM management tasks and take advantage of instantaneous snapshots to make your backup operations more efficient.

Simple. Advanced. Affordable. Learn more and see how the IceWEB Storage System 5000-HR can simplify your data storage while offering all the functionality you'd expect from an enterprise-class platform.

Contact us at 800-465-4637.



	IceWEB Storage System 5000HR (each system unit)	SS-5000HR-8	SS-5000HR-16	SS-5000HR-32	SS-5000HR-9.6
Hardware	Standard (Maximum) Processor Configuration	One (Two) Intel Xeon 3.0 GHz Quad-Core			
	System Memory	24 GB DDR2-667, Fully Buffered			
	Networking	6x Gigabit Ethernet (GbE)			
	Option	1x 10 Gigabit Ethernet			
	Option	2x 4 GB FibreChannel			
	Option	2x 8 GB FibreChannel			
	Storage Controller	One RAID Controller (SAS / SATA)			
Storage	Standard Capacity	8 TB	16 TB	32 TB	9.6 TB
	Maximum Capacity	448 TB			
	Standard Disk Capacity	8x 1TB MDL SAS	16x 1TB MDL SAS	16x 2TB MDL SAS	16x 600GB ENT SAS
	Option	128 GB SLC High-Performance SSD			
	Form Factor	2U			
	Maximum Expansion Disk Shelves	14			
Software	File System	Zettabyte File System (ZFS) - 128-bit compatibility			
	File System Protocols	NFSv2, NFSv3, NFSv4, CIFS, FTP, HTTP, WebDAV, rsync, NDMP			
	Block Protocols	iSCSI, FibreChannel			
	Storage Pools	Hybrid; Shared Pool supporting multiple classes of storage			
	RAID Levels	Striping, Mirroring, Single Parity RAID-Z, Dual Parity RAID-Z2 and Triple Parity RAID-Z3			
	Data Compression	Integrated			
	Data Deduplication	Integrated (block-level)			
	Data Integrity	Metadata and user data checksums			
	Snapshots	Instantaneous, High-Performance, Unlimited			
	Snapshot Rollback	Instantaneous			
	Thin Provisioning	Integrated			
	Storage Quotas	File system, Directory			
	Replication	Synchronous, Asynchronous			
	VM Integration	VMware, Microsoft HyperV, Citrix XenServer			
Network Services	System Management	Integrated; HTTP or HTTPS-based, Remotely Accessible and Manageable			
	Directory Services	Active Directory, NIS, LDAP			
Power	AC Input	Auto-switching, 110 / 220 V, 47-63 Hz			
	Current	6.0A (Startup), 2.4A (Nominal)			
	Power Supply	2x 750W Redundant Hot-Swap PFC			
	Power Supply Efficiency	Efficiency > 78% (110V), > 83% (220V)			
Physical	Dimensions (D x W x H)	27.75" D x 19" W x 3.4" H / 705mm D x 482.6mm W x 86.4mm H			
	Weight	40 lbs / 18.1 kg (without disk drives)			
Environment	Temperature	Operating: 10C to 35C (50F to 95F)			
	Humidity	Operating: -16m to 3048m (-50ft to 10,000ft)			
	Altitude	Operating: -16m to 3048m (-50ft to 10,000ft)			
	Shock	Maximum: One shock pulse in positive Z-axis of 41g for up to 2ms operating			
	Vibration	Maximum: 0.26 Grms at 5-350Hz operating			
Regulatory Approvals	Emissions	FCC Part 15 Class A, CE Class A, VCCI Class A, ACMA Class A, ICES Class A			
	Safety	UL 60950-1, CSA 60950-1, EN 60950-1			

Optional Features

- * Second Intel Xeon 3.0 GHz Quad-Core Processor
- * 128 GB SLC High-Performance SSD
- * 10 Gb Ethernet
- * 600GB 15K RPM ENT SAS

- * 2-port 4 GB Fibre Channel
- * 2-port 8 GB Fibre Channel
- * Write-Once, Read Many (WORM)