

High capacity Fibre Channel and 10Gb Ethernet unified storage for your data center and remote site.

The IceWEB 5000-HP provides high performance commercial storage for business applications. Optimized around providing outstanding I/O and throughput performance for your business critical applications, the 5000-HP combines the fastest drive technology with 4 or 8Gb Fibre Channel or 10Gb Ethernet to ensure more than adequate bandwidth for your most demanding applications. The System includes all the storage management features required for today's virtualized application infrastructure, without all the complexity and cost.

It's Simple.

Simplify the management of your environment with an all-inclusive storage system that lets you store both block and file data - Microsoft Exchange, SQL Server and Oracle databases, virtualized environments, images, files, video, pictures, graphics and voice - on one enterprise-class platform. The IceWEB Storage System is highly automated and easy to manage. Set up wizards allow you to provision storage in as little as 15 minutes and the intuitive interface simplifies the use of its sophisticated storage management capabilities. The features and price make the IceWEB Storage System a perfect fit for both data center and disaster recovery sites.

It's Safe.

All IceWEB Storage System configurations offer a complete set of availability and reliability features:

- Hot-pluggable drives and power supplies
- Built-in support for RAID-Z (RAID-5), RAID-Z2 (RAID-6), and RAID-Z3 (triple parity)
- Volume replication, automatic error correction and background data scrubbing ensures data integrity
- Optional clustered controller units ensures no single point of failure within the storage subsystem

It's Advanced.

All IceWEB Storage System configurations offer a complete set of storage management features, including in-line de-duplication, data compression and thin provisioning, for unparalleled storage efficiency rates. This combination of technologies dramatically reduces your physical storage requirements compared to other

systems. In some cases, efficiency rates can approach 90 percent. With the purchase of only 10TBs of storage, you have access to 100TBs of capacity. That's outstanding value in terms of dollar per usable terabyte, plus dramatically reduces your power consumption and data center footprint.

In addition, the IceWEB systems include unlimited snapshots, clones, asynchronous and synchronous replication, and a host of other features, all included for no extra charge in the standard product.

It's Powerful.

The true measure of any storage system is its ability to deliver the performance you need for your applications. IceWEB Storage Systems use a sophisticated layered cache that, in many cases, delivers more I/O performance than the standard rating for the drives, meaning you buy fewer disk drives to get the performance you need. Combined with fast 15K RPM SAS drive technology, the 5000-HP delivers the most I/Os per second of any comparable system and is optimized around delivering the best I/O per dollar possible. Configurations with many disk drives need an adequate pipe to deliver their performance, so the IceWEB 5000-HP comes with six 1GbE connections and optional upgrades to one or two 10Gb Ethernet controllers for applications requiring top-end bandwidth. Also, 4 or 8Gb Fibre Channel connections are available for environments large numbers of disk spindles are needed, offering plenty of bandwidth for large databases or throughput intensive jobs.

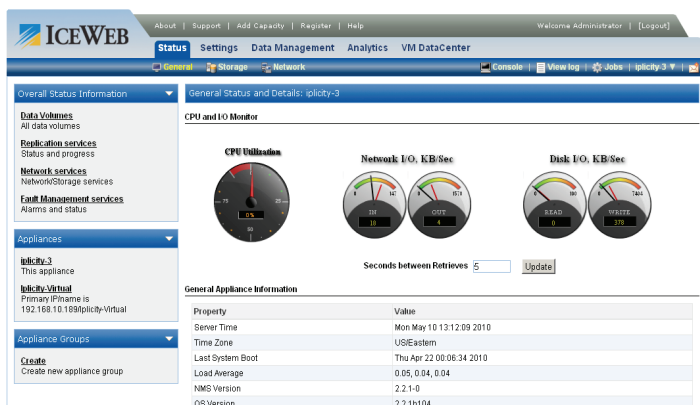
It's Affordable.

We challenge you to find a more capable platform for the price. The IceWEB Storage System combines the right mix of functionality with the service and support you get from a nimble, customer-oriented company.

It's Hypervisor Ready.

To make the most of your virtual server environment, create storage pools with the IceWEB Storage System 5000. You can manage a storage pool against a set of virtual machines, easily managing both iSCSI volume and file shares used by virtual servers. IceWEB supports VMware, Citrix and Microsoft Hyper-V, and is compatible with VMware SRM and Citrix StorageLink for use with disaster recovery (DR) environments.

Simple. Advanced. Affordable. Learn more and see how the IceWEB Storage System 5000-HP can simplify your data storage while offering all the functionality you'd expect from an enterprise-class platform.



Contact us at 800-465-4637.

	IceWEB Storage System 5000HP (each system unit)	SS-5000HP-4.8	SS-5000HP-9.6
Hardware	Standard (Maximum) Processor Configuration	One (Two) Intel Xeon 3.0 GHz Quad-Core	
	System Memory	32 GB DDR2-667, Fully Buffered	
	Networking	6x Gigabit Ethernet (GbE)	
	Option	1x 10 Gigabit Ethernet	
	Option	2x 4 GB Fibre Channel	
	Option	2x 8 GB FibreChannel	
	Storage Controller	2x RAID Controllers (SAS / SATA)	
Storage	Standard Capacity	4.8 TB	9.6
	Maximum Capacity	144 TB	
	Standard Disk Capacity	600 GB 15K RPM SAS	
	Option	128 GB SLC High-Performance SSD	
	Form Factor	3u	
	Maximum Expansion Disk Shelves	14	
Software	File System	Zettabyte File System (ZFS) - 128-bit compatibility	
	File System Protocols	NFSv2, NFSv3, NFSv4, CIFS, FTP, HTTP, WebDAV, rsync, NDMP	
	Block Protocols	iSCSI, Fibre Channel	
	Storage Pools	Hybrid; Shared Pool supporting multiple classes of storage	
	RAID Levels	Striping, Mirroring, Single Parity RAID-Z, Dual Parity RAID-Z2 and Triple Parity RAID-Z3	
	Data Compression	Integrated	
	Data Deduplication	Integrated (block-level)	
	Data Integrity	Metadata and user data checksums	
	Snapshots	Instantaneous, High-Performance, Unlimited	
	Snapshot Rollback	Instantaneous	
	Thin Provisioning	Integrated	
	Storage Quotas	File system, Directory	
	Replication	Synchronous, Asynchronous	
	VM Integration	VMware, Microsoft HyperV, Citrix XenServer	
	Network Services	System Management	Integrated; HTTP or HTTPS-based, Remotely Accessible and Manageable
Directory Services		Active Directory, NIS, LDAP	
Power	AC Input	Auto-switching, 110 / 220 V, 47-63 Hz	
	Current	6.0A (Startup), 2.4A (Nominal)	
	Power Supply	2x 800W Redundant Hot-Swap PFC	
	Power Supply Efficiency	Efficiency > 78% (110V), > 83% (220V)	
Physical	Dimensions (D x W x H)	28"D x 19"W x 5.25" H	
	Weight	40 lbs (without disk drives)	
Environment	Temperature	Operating: 10C to 35C (50F to 95F)	
	Humidity	Operating: 20% to 80% (non-condensing)	
	Altitude	Operating: -16m to 3048m (-50ft to 10,000ft)	
	Shock	Maximum: One shock pulse in positive Z-axis of 41g for up to 2ms operating	
	Vibration	Maximum: 0.26 Grms at 5-350Hz operating	
Regulatory Approvals	Emissions	FCC Part 15 Class A, CE Class A, VCCI Class A, ACMA Class A, ICES Class A	
	Safety	UL 60950-1, CSA 60950-1, EN 60950-1	

Optional Features

- * Second Intel Xeon 3.0 GHz Quad-Core Processor
- * 128 GB SLC High-Performance SSD
- * Write-Once, Read Many (WORM)

- * 10 Gb Ethernet
- * 2-port 4 GB Fibre Channel
- * 2-port 8 GB Fibre Channel